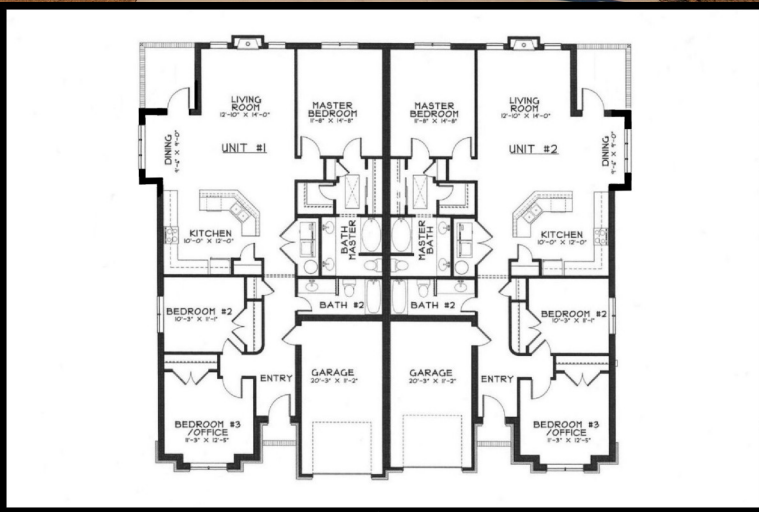


# The Villas at Cobblestone -Lot 153 -A

\$139,900



UPSCALE,

ATTACHED

PATIO-HOMES.

*COMPARE TO SINGLE FAMILY  
HOMES & YOU'LL BE AMAZED AT  
THE QUALITY AND VALUE*

- ◆ Three Bedrooms
- ◆ Two Bathrooms
- ◆ E-300 Rated
- ◆ Approximately 1520 HSF
- ◆ Screened Back Porch
- ◆ One Car Garage w/Opener
- ◆ Lots of Hardwood Flooring
- ◆ Tiled Floors in Bathrooms
- ◆ Low-e Double Hung Windows
- ◆ Fireplace w/ Logs
- ◆ MLS # 82581

2508 Brookville Dr. | Greenville | NC | 27834

Do you want the safest, strongest, quietest, most energy efficient home available? This is a **LOGIX™ HIGH PERFORMANCE** home with solid poured concrete within an insulated panel. It is a very bright and open plan with plenty of natural light, hardwood flooring, ceramic tile and a one car garage. **Save \$\$\$** on your utility bills and home maintenance in this split bedroom ranch design where bedroom three can easily convert to a home office.

WHAT DOES "ICF" MEAN? Learn all about it at [ncicf.com](http://ncicf.com)



**Dan Thomas — Realtor / Broker**

**Dan Thomas Realty**

*"NO NONSENSE" REAL ESTATE*

589 Alma Drive  
Winterville, NC 28590

[danthomasrealty.com](http://danthomasrealty.com)  
[ncicf.com](http://ncicf.com)

Phone: 252-355-3755  
Fax: 252-355-3755  
E-mail: [dan@danthomasbuilders.com](mailto:dan@danthomasbuilders.com)

